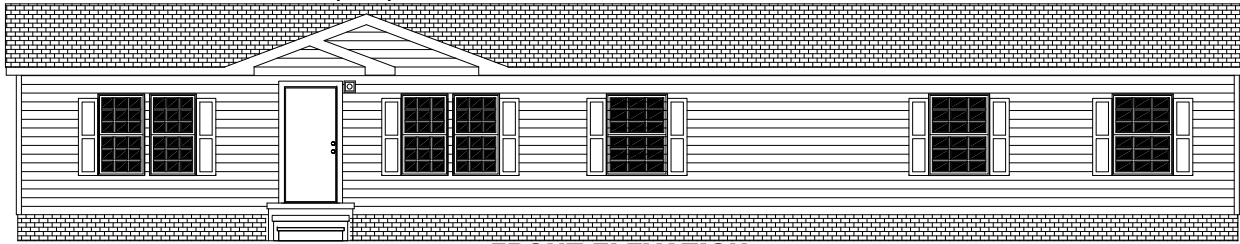
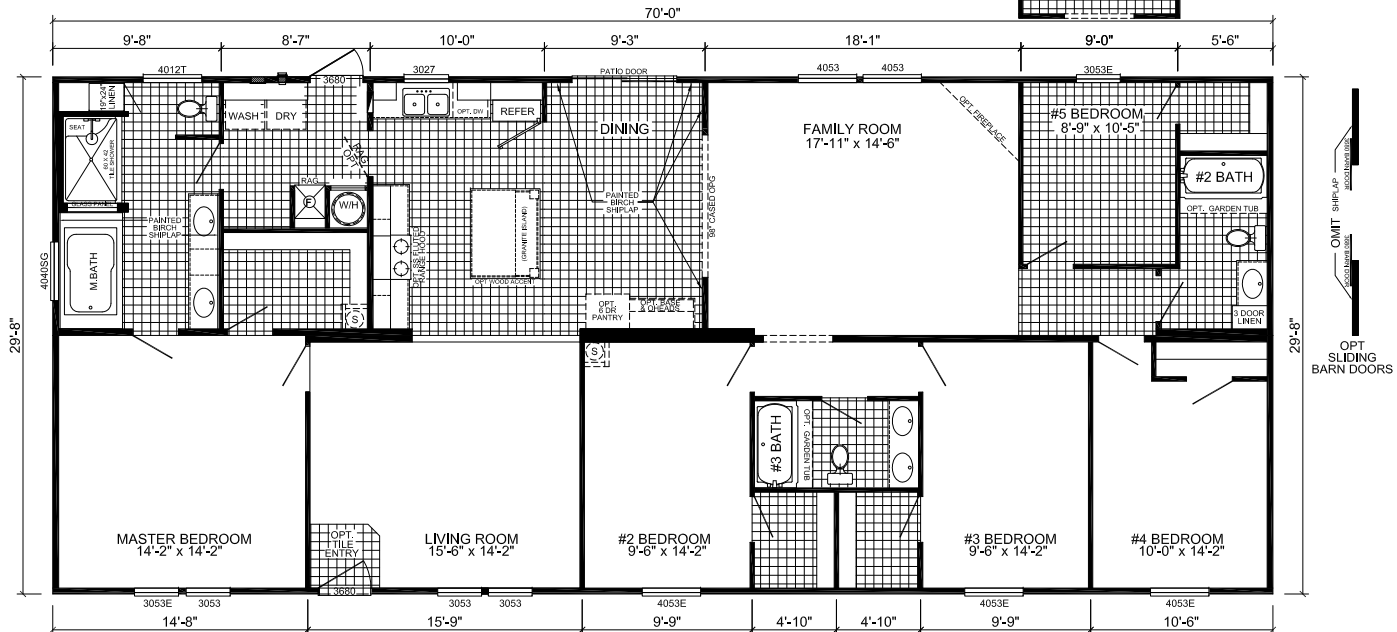
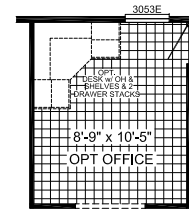


**EXTERIOR VINYL SHAKER PACKAGE
(OPT)**



FRONT ELEVATION

ROCKY MOUNTAIN



H-3705A-PS
5-BEDROOM / 3-BATH
32 X 74 - Approx. 2076 Sq. Ft.

Date: 06/12/20
 * All room dimensions include closets and square footage figures are approximate.
 * Transom windows are available on optional 9'-0" skidwall houses only.
 * Skirting shown is optional.
 * Live Oak Homes reserves the right to modify product offering at any time.

OPT SHIP-LAP
 OPT SLIDING BARN DOORS