

EXTERIOR VINYL SHAKER PACKAGE
(OPT)

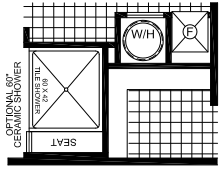
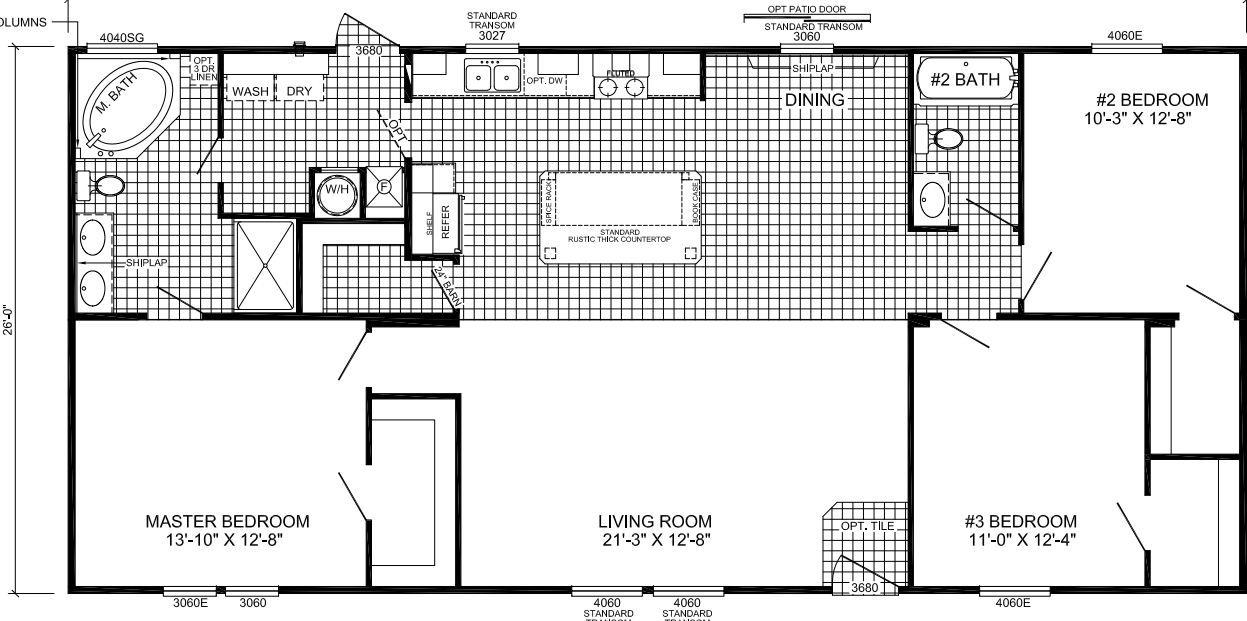
BLAZER



DORMERS SHOWN ARE OPTIONAL.

56'-0"

3" X 6" COLUMNS



26'-0"

M-2563D-SIG-OAK

3-BEDROOM / 2-BATH

28 x 60 - Approx. 1456 Sq. Ft.

Date: 12/09/20

- * All room dimensions include closets and square footage figures are approximate.
- * Transom windows are available on optional 9'-0" sidewall houses only.
- * Live Oak Homes reserves the right to modify product offering at any time.

