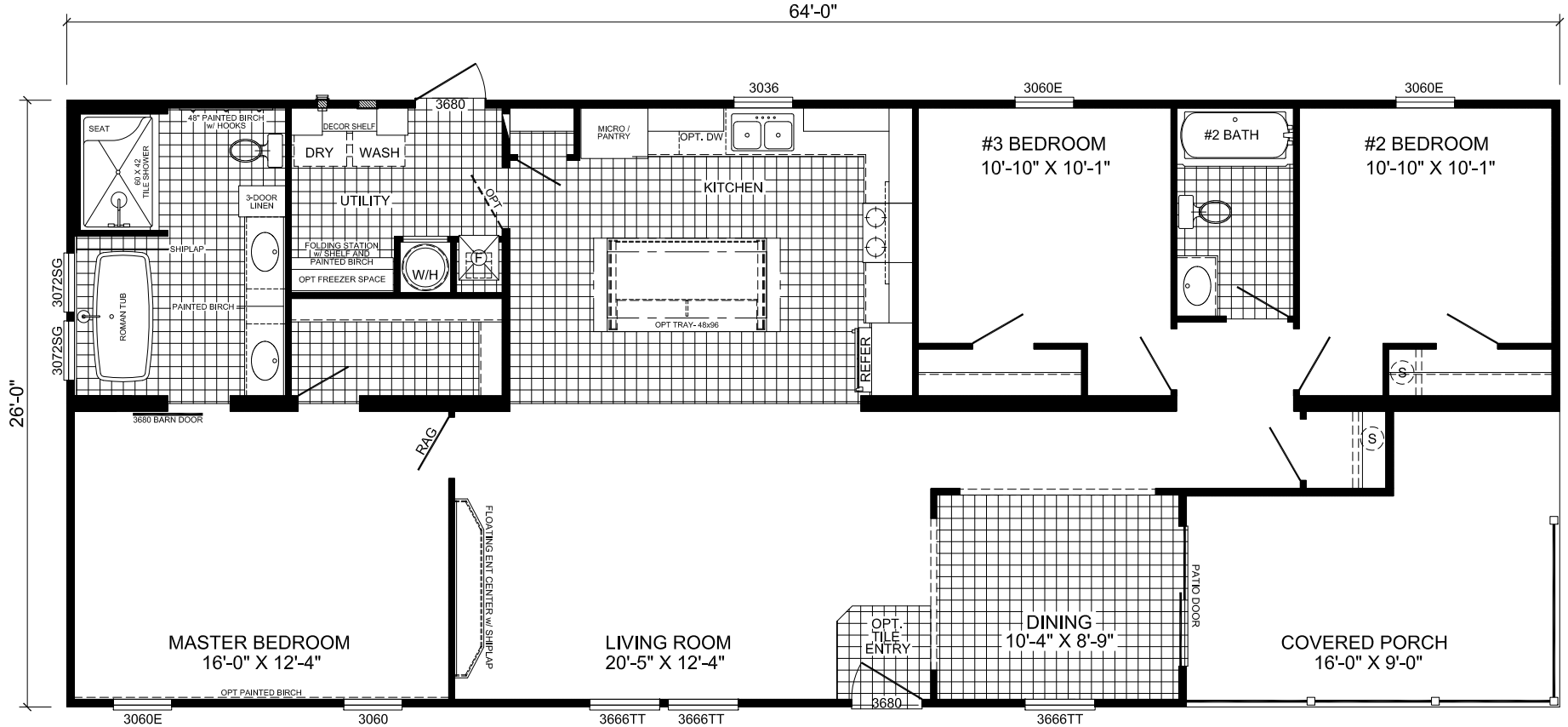




**FRONT ELEVATION**



**D-2643B**

**3-BEDROOM / 2-BATH**

**28 X 68 - Approx. 1792 Sq. Ft.**

Date: 04/16/24

\* All room dimensions include closets and square footage figures are approximate.  
 \* Transom windows are available on optional 9'-0" sidewall houses only.

**LAKE POINT**